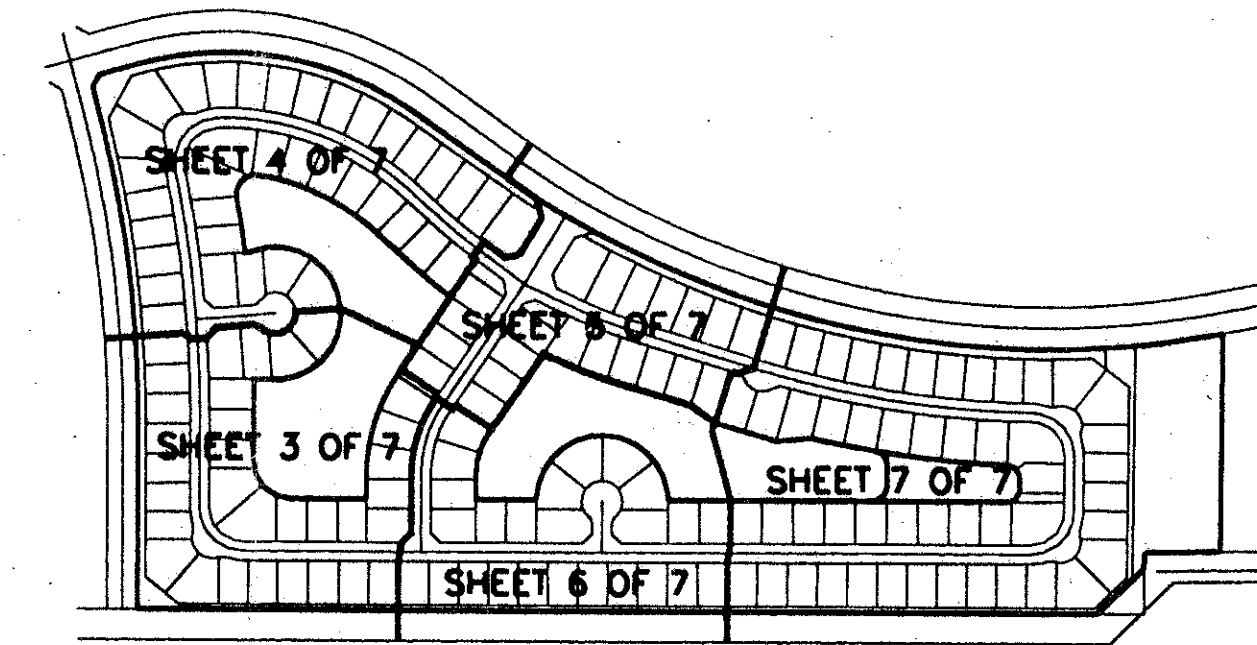


ABERDEEN - PLAT NO. 24

0270-027

178

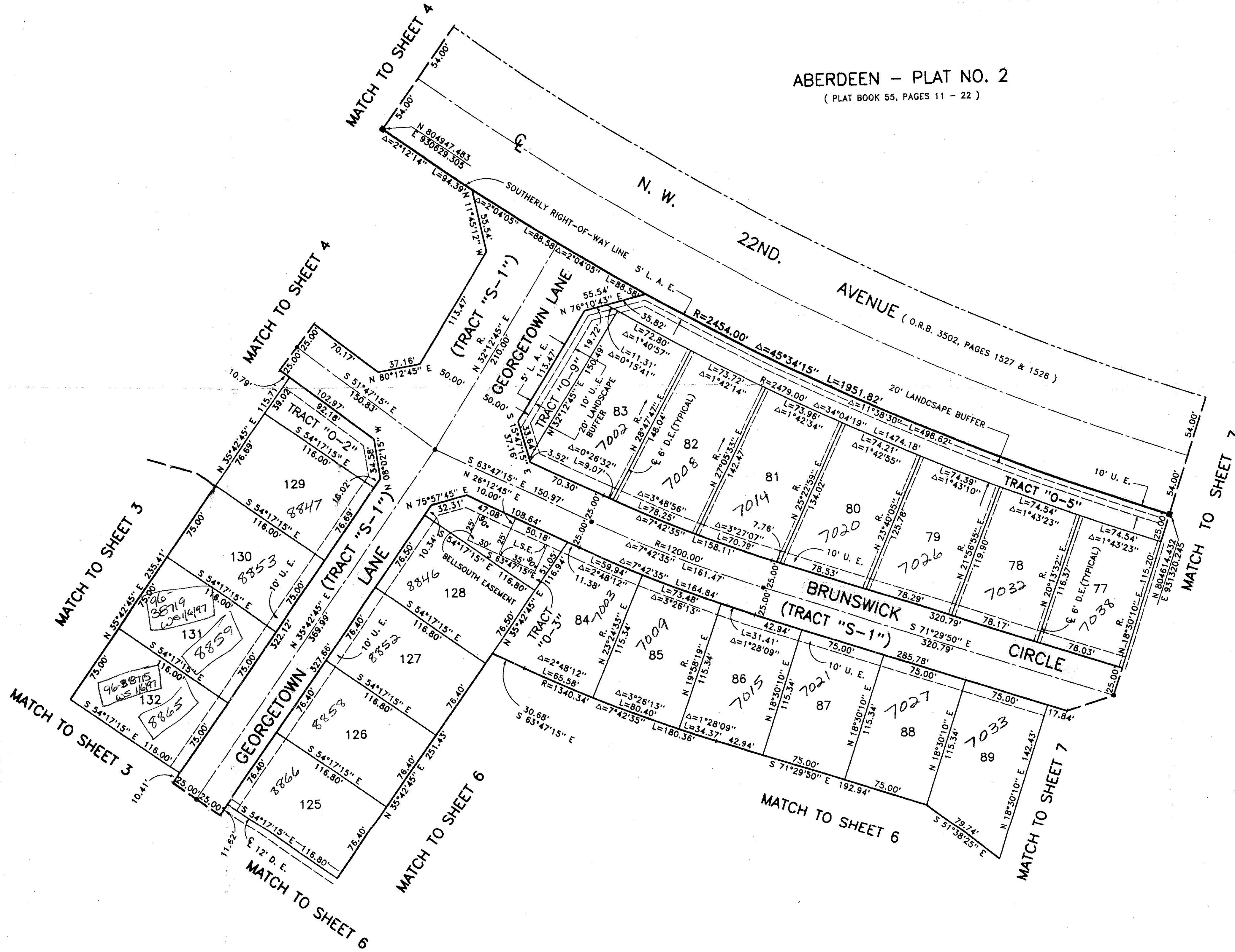
A PORTION OF A P.U.D.
 LYING IN SECTIONS 15 AND 16, TOWNSHIP 45 SOUTH, RANGE 42 EAST
 BEING A REPLAT OF A PORTION OF ABERDEEN - PLAT NO. 2 AS RECORDED IN PLAT
 BOOK 55, PAGES 11 THRU 22, PUBLIC RECORDS OF PALM BEACH COUNTY, FLORIDA
 SHEET 5 OF 7



STATE OF FLORIDA
 COUNTY OF PALM BEACH
 This Plat was filed for record at _____
 M. This day of _____, 19____
 and duly recorded in Plat Book No. _____
 on Page _____
 Dorothy H. Wilken, Clerk of the Circuit Court
 By _____ D.C.

KEY MAP
 NOT TO SCALE

ABERDEEN - PLAT NO. 2 (PLAT BOOK 55, PAGES 11 - 22)



COORDINATE NOTE:
 STATE PLANE COORDINATES SHOWN ARE GRID DATUM, NAD 83 1990
 ADJUSTMENT, FLORIDA EAST ZONE, COORDINATE SYSTEM 1983 STATE
 PLANE TRANSVERSE MERCATOR PROJECTION.
 LINEAR UNIT = US SURVEY FEET
 ALL DISTANCES ARE GROUND
 SCALE FACTOR = 1.0000277
 GROUND DISTANCE X SCALE FACTOR = GRID DISTANCE
 N 88°22'07"W (PLAT BEARING) -01°45'30" COUNTER CLOCKWISE
 S 89°52'23"W (GRID BEARING) BEARING ROTATION (PLAT TO GRID)
 COMMON LINE BETWEEN PLAT AND THE SOUTH LINE OF ABERDEEN-PLAT
 NO. 2 (P. B. 55, PAGES 11 - 22) AND THE SOUTH LINE OF SECTION 16

*Pet. 80-153
 Alloc. #0001
 5/2/2/I*

*ABERDEEN PUD
 TRACT M*

SUBDIVISION: ABERDEEN
 BOOK 77
 FLOOD ZONE: A
 QUAD: 34
 SE: 40-153
 PUD NAME: ABERDEEN
 PAGE 178
 FLOOD MAP #190A
 ZONING: RS
 ZIP CODE: 33436

Scale 1" = 50'

P.B. 77 Page 178

Landmark Surveying & Mapping Inc.
 1850 FOREST HILL BOULEVARD
 PH. (407)433-5405 SUITE 100 W.P.B. FLORIDA

ABERDEEN - PLAT NO. 24

0270-027

Records